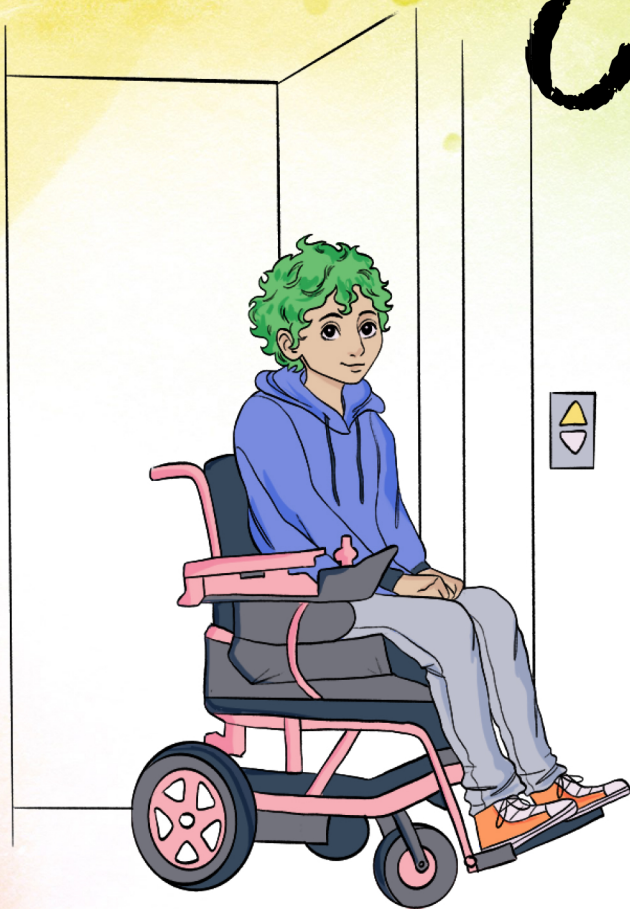


defining... EQUITY



A commitment to creating opportunities for historically marginalized groups to gain fair and just access to and participation in education.

This is a focus on getting students and employees what they need rather than treating everyone the same.



This recognizes that not everyone is accessing education from an equal standpoint due to systemic and historical disparities.



Learn more about the work ACC is doing at
arapahoe.edu/inclusive-excellence
or scan the QR code.